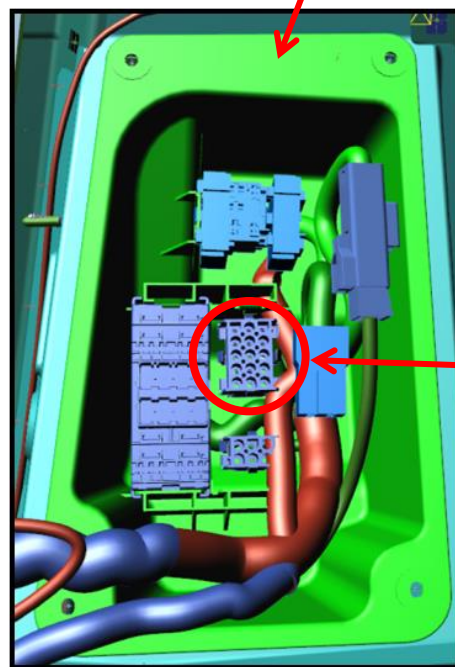
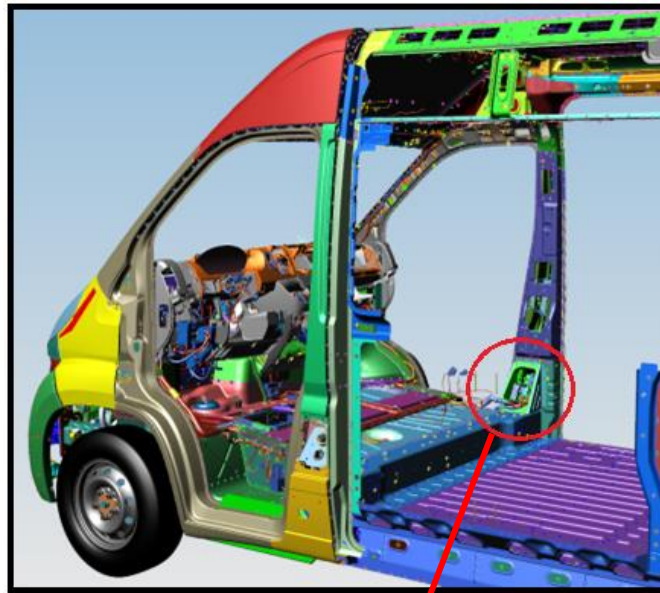


The up fit interface connector is available as a standalone option (Sales code BC3) and is package with the Aux Power Connector (BC1) or Rear Speaker Wiring Prep. (RED) This option **cannot be added** at the aftermarket or by the dealer. The connector is located behind a panel at the base of the passenger side B pillar. Remove the panel to expose the connectors.



Up Fit Interface Connector

ProMaster Upfitter Interface Connector

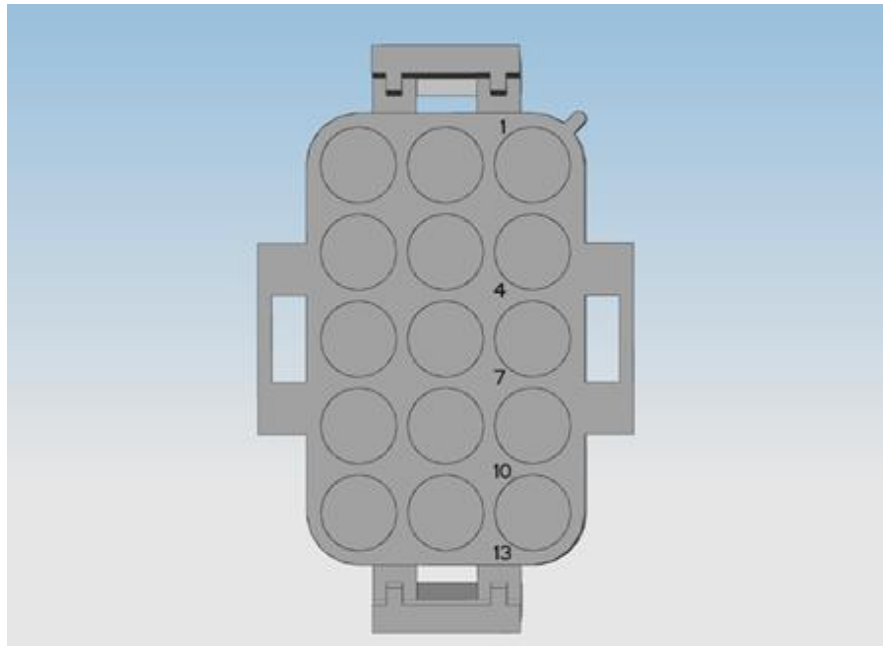
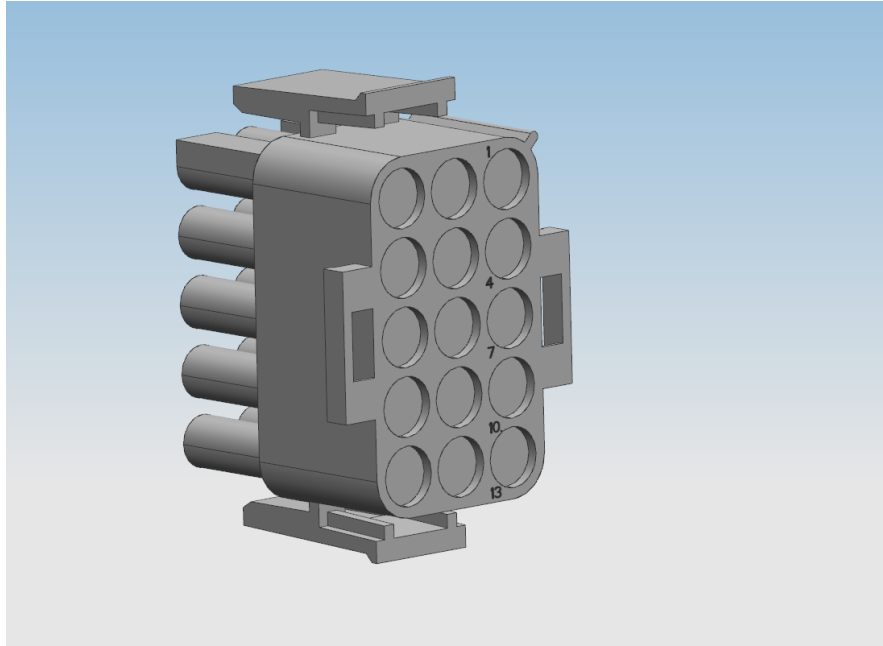
Connectors and Terminals Manufactured by **Tyco Electronics**

Vehicle Harness Connector: Tyco P/N **926647-1**
 Mating Connector: Tyco P/N **1-480710-0** (up fitter provided)
 Mating Connector Terminal: Tyco P/N **350218-1** (up fitter provided)

PIN	Circuit Function	Min Wire Size (mm ²)	Wire Color	Notes
1	Courtesy Lamps Driver (2019 and Newer)	0.5	WH/YE	
2	Aux Run Relay Control (LSD)	0.35	BN/BK	300 mA Max current – pulled to ground with engine running
3	Vehicle Speed Output (VSO)	0.35	BN/LG	5 mA Max Current (0 to 5V Square Wave. 50% Duty Cycle. Variable Frequency. 0 V at 0MPH. Vspd (MPH) = F (HZ) *.6 (MPH/HZ) Round to nearest MPH)
4	Door Lock Control (Chassis Cab Only)	1.5	RD/BK	12 A Max Current 400mS Pulse
5	Door Unlock Control (Chassis Cab Only)	1.5	OR/GN	12 A Max Current 400mS Pulse
6	Rear door Ajar Signal (Chassis Cab Only)	0.35	BK/VT	Ground this circuit when any rear door is open (minimum contact cleaning current 10 mA)
7	Courtesy Lamp Feed	0.5	RD/GN	Power supply (+) for timed ceiling light 15' with key off (Pmax= 20 W at 12 V)
8	Cargo Lamp (Dimmer) (Chassis Cab Only)	0.75	WH/GN	Ceiling light control (-) Pmax=20 W at 12 V
9	No Connect			
10	No Connect			
11	Park Lamp Relay Control (LSD)	0.5	YE/RD	300 mA Max Current- Pulled to Ground with Park Lamp on
12	Aux 2 Switch Output (2016 and Newer)	2.5	YE/BK	Ignition fed, 20 A fuse, F87 in adjacent fuse block (Sales Code LHL)
13	Ignition Feed	0.5	DB/YE	600 mA Max Current 12V with Ignition on 5 A Fuse CBC FAO
14	Rear Heat Control (2015 and Newer)	0.35	BN/GY	Low Side Drive for Vehicles with Rear Heat and AC Prep (Sales Code HDG) 300 mA Max continuous.
15	Aux 1 Switch Output (2016 and Newer)	2.5	RD	Battery fed, 20 A fuse, F86 in adjacent fuse block (Sales Code LHL)

ProMaster Upfitter Interface Connector

The following views are of the wire insertion side of the up fitter provided mating connector. (Tyco P/N 1-480710-0)



ProMaster Upfitter Interface Connector